

NUTS ABOUT NETS, LLC

Innovative Tools For Troubleshooting Wireless Networks

Pro Audio White Space Finder / RF Spectrum Analyzer

Model PAWS4400

WHITE SPACE FINDER

Automatic charting of open white spaces in a realtime environment.

GRAPHICAL USER INTERFACE

Easy to use; relevant data is displayed in a clear, concise way.

FAST

Fast data acquisition, display, and channel assignments.

QUICK AND EASY SETUP

Allows novice and expert users to be up and running right away.

PROFILES

Built-in and user-defined profiles. User-definable threshold for open white space.

SENSITIVE AND ACCURATE MEASUREMENTS

For more information on WifiBuilder please visit us on the Web at:
<http://www.nutsaboutnets.com/>



PAWS4400 is the next generation of PC-based, RF spectrum analyzer for the pro audio and video industries to offer automatic charting of open white space and channel assignment...

In a hostile RF environment why leave your wireless planning to chance ?!

Take the guess work out of configuring your wireless audio gear -- Pro Audio White Space Finder / RF Spectrum Analyzer (PAWS4400) enables you to choose the best channel assignments -- free from RF interference and intermodulation distortion (IMD).

Designed With These Goals In Mind:

- Automatic charting of open white spaces (RF frequencies) in a real-time RF environment.
- Graphical UI that is easy to use; lays-out the relevant data in a clear, concise way.
- The UI is tablet-PC friendly.
- Fast data acquisition, display, and channel assignments.
- Sets up the RF spectrum analyzer with proper default settings for span, RBW, VBW, image suppression, scaling, and sensitivity with minimal user input. This allows users with little to no experience with spectrum analyzers to get right to work.
- User-definable threshold for open white space.
- Sensitive and accurate measurements.

NUTS ABOUT NETS, LLC

A leader and innovator in wireless network diagnostics

NUTS ABOUT NETS, LLC

Innovative Tools For Troubleshooting Wireless Networks

WHITE SPACE FINDER

Automatic charting of open white spaces in a realtime environment.

GRAPHICAL USER INTERFACE

Easy to use; relevant data is displayed in a clear, concise way.

FAST

Fast data acquisition, display, and channel assignments.

QUICK AND EASY SETUP

Allows novice and expert users to be up and running right away.

PROFILES

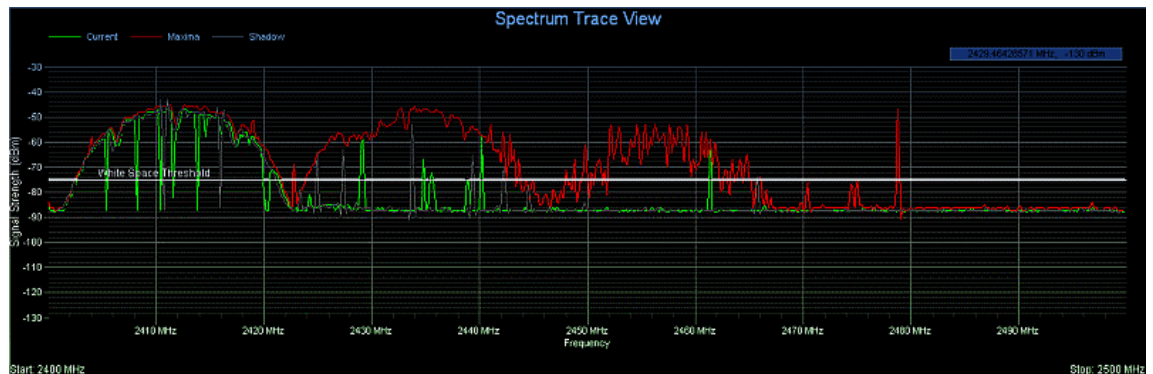
Built-in and user-defined profiles. User-definable threshold for open white space.

SENSITIVE AND ACCURATE MEASUREMENTS

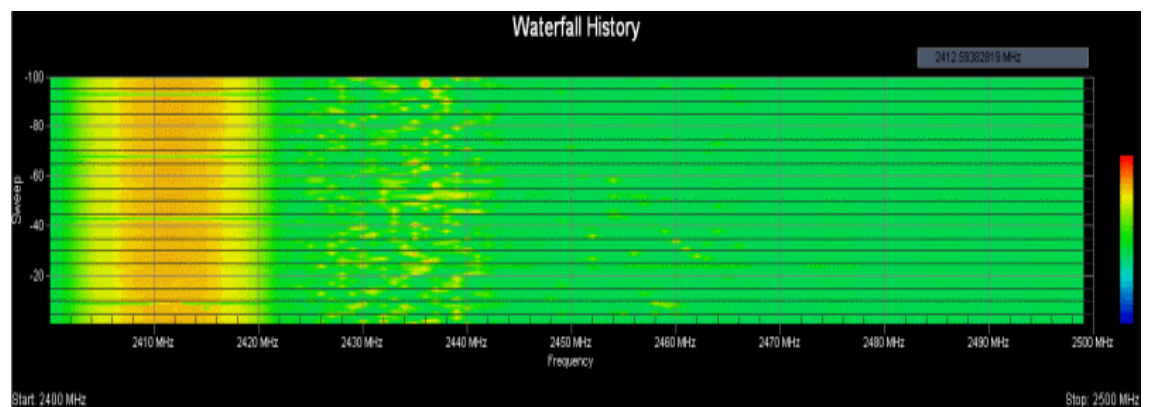
For more information on WifiBuilder please visit us on the Web at:
<http://www.nutsaboutnets.com/>

Employing the new Signal Hound 4.4 GHz, broadband RF spectrum analyzer as our hardware platform -- we've developed PAWS4400 as the next generation of PC-based, RF spectrum analyzer specifically designed for the professional audio and video industries. PAWS4400 is built upon the success of our award-winning Invisible Waves™ RF spectrum analyzer which was the industry's first, PC-based, RF spectrum analyzer to offer automatic charting of open white space (open RF frequencies) for use with wireless microphones, in-ear monitors, remote control, security, access control, etc.

Full Spectrum and ROI (Region-Of-Interest) Trace Views



Waterfall History



* Invisible Waves is a trademark of Kaltman Creations, LLC

Nuts About Nets, LLC

A leader and innovator in wireless network diagnostics

NUTS ABOUT NETS, LLC

Innovative Tools For Troubleshooting Wireless Networks

WHITE SPACE FINDER

Automatic charting of open white spaces in a realtime environment.

GRAPHICAL USER INTERFACE

Easy to use; relevant data is displayed in a clear, concise way.

FAST

Fast data acquisition, display, and channel assignments.

QUICK AND EASY SETUP

Allows novice and expert users to be up and running right away.

PROFILES

Built-in and user-defined profiles. User-definable threshold for open white space.

SENSITIVE AND ACCURATE MEASUREMENTS

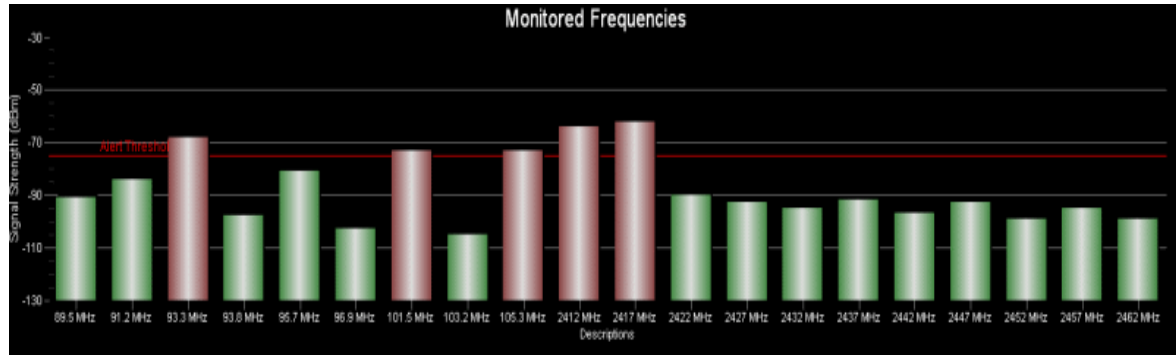
For more information on WifiBuilder please visit us on the Web at:

<http://www.nutsaboutnets.com/>

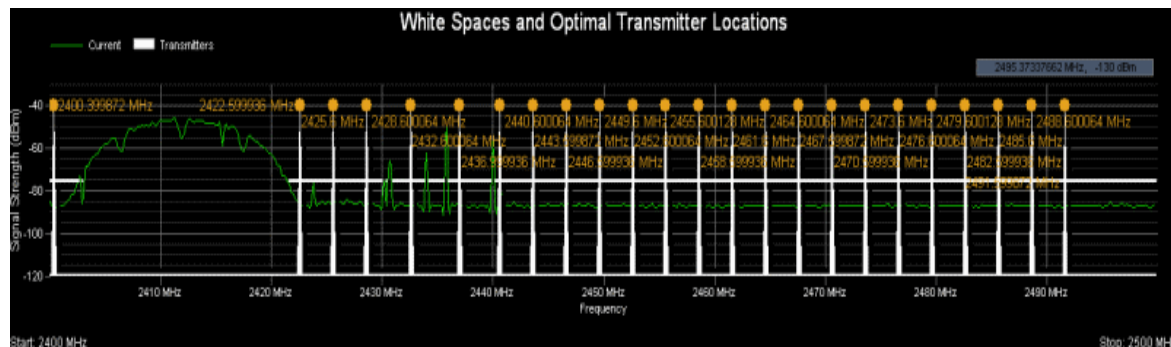
Utilizing the existing hardware design offered by the Signal Hound spectrum analyzer we have engineered software that is geared toward sound reinforcement users. The software and documentation included with Pro Audio White Space Finder / RF Spectrum Analyzer allow even a novice user to get up to speed in no time and start making informed decisions about frequency coordination.

Though many of its features are well suited for wireless professional audio production and AV integration, the PAWS4400 is a sensitive and accurate, broadband 4.4 GHz RF spectrum analyzer that is an excellent tool for general commercial and industrial RF work (e.g. in the 900 MHz and 2.4 GHz ISM bands).

Monitored Frequencies



White Spaces and Optimal Channel Assignments



NUTS ABOUT NETS, LLC

A leader and innovator in wireless network diagnostics

NUTS ABOUT NETS, LLC

Innovative Tools For Troubleshooting Wireless Networks

WHITE SPACE FINDER

Automatic charting of open white spaces in a realtime environment.

GRAPHICAL USER INTERFACE

Easy to use; relevant data is displayed in a clear, concise way.

FAST

Fast data acquisition, display, and channel assignments.

QUICK AND EASY SETUP

Allows novice and expert users to be up and running right away.

PROFILES

Built-in and user-defined profiles. User-definable threshold for open white space.

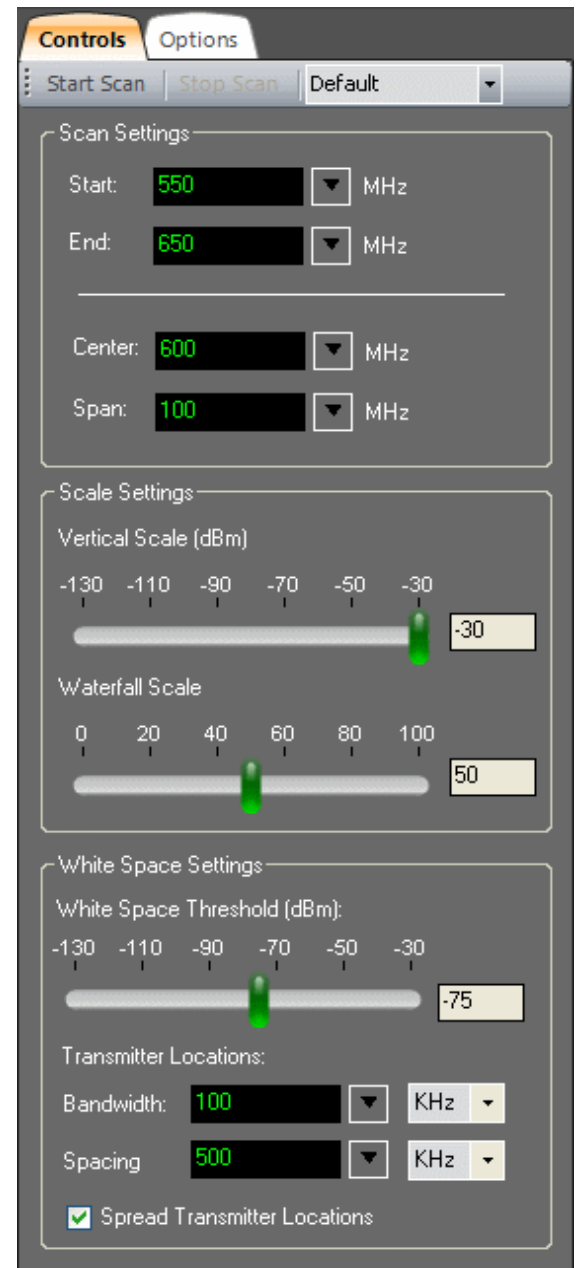
SENSITIVE AND ACCURATE MEASUREMENTS

For more information on WifiBuilder please visit us on the Web at:
<http://www.nutsaboutnets.com/>

Compared to Invisible Waves™ the PAWS4400 product is much improved -- yet it sells for the same price. The lion's share of the improvement is the hardware. The Signal Hound RF spectrum analyzer used with PAWS4400 is much superior to the WinRADio scanner used with the earlier product. Here are a few of the advantages:

1. PAWS4400 supports frequencies up to 4.4 GHz, whereas Invisible Waves™ was limited to 1.8 GHz.
2. The Signal Hound spectrum analyzer used with PAWS4400 can scan more than 100x faster than a WinRADio scanner. This means more data points can be collected per trace, which also translates to greater accuracy. This is a huge advantage.
3. The Signal Hound spectrum analyzer connects to a PC (laptop or desktop) via USB cable -- which is used not only for communication with software running on the PC, but also for power. The WinRADio scanner required either an external power pack or an AC adapter plugged into a wall outlet.
4. Though PAWS4400 is well suited for wireless professional audio production and AV integration, it is also the perfect tool for general commercial and industrial RF work (e.g. 900 MHz and 2.4 GHz ISM bands). It supports frequency ranges 500 KHz through 4.4 GHz.

* Invisible Waves is a trademark of Kaltman Creations, LLC



NUTS ABOUT NETS, LLC

A leader and innovator in wireless network diagnostics

NUTS ABOUT NETS, LLC

Innovative Tools For Troubleshooting Wireless Networks

WHITE SPACE FINDER

Automatic charting of open white spaces in a realtime environment.

GRAPHICAL USER INTERFACE

Easy to use; relevant data is displayed in a clear, concise way.

FAST

Fast data acquisition, display, and channel assignments.

QUICK AND EASY SETUP

Allows novice and expert users to be up and running right away.

PROFILES

Built-in and user-defined profiles. User-definable threshold for open white space.

SENSITIVE AND ACCURATE MEASUREMENTS

For more information on WifiBuilder please visit us on the Web at:
<http://www.nutsaboutnets.com/>

Specification

Frequency Range:

1Hz to 4.4GHz (RF Preamp Off); 500KHz to 4.4GHz (RF Preamp On)
Internal Frequency Reference Accuracy: +/- 1ppm
Counter Accuracy: 1Hz + timebase error
Resolution Bandwidth: 0.1Hz to 250KHz and 5MHz

Amplitude (RBW <= 100KHz)

Range: +10dBm to Displayed Average Noise Level (DANL)
Absolute Accuracy: +/- 1.5 dBm (0 dBm to DANL); +/- 2.0 dB (+10 dBm to > 0 dBm)
Displayed Average Noise Level: (dBm/Hz with 0dB input attenuation)
Wide dynamic range: -151 dBm to +10 dBm
Resolution bandwidths (RBW) of 0.1 Hz to 250 KHz and 5 MHz

Measuring Receiver

Operating Frequency: 150KHz to 4.4GHz
FM Accuracy: +/- 1% typical
AM Accuracy: +/- 1% typical
Includes a High Dynamic Range Measuring Receiver
0.25 dB relative accuracy
0 dBm to -125 dBm, 150 KHz to 1 GHz
0 dBm to -115 dBm, 1 GHz to 4.4 GHz
Adjustable digital audio filters
Accurate AM and FM measurements

General:

Calibration Interval: 1-year
Operating Temperature: 0 to 70 degrees celsius
No external power supply needed - draws power from USB
Powerful Digital Signal Processing happens on the PC
Compatible with Windows operating systems
USB 2.0 communications at 480 MBPS
Demodulates AM/FM/SSB/CW audio in real-time
Measures 8 inches long
Weighs 10 ounces

NUTS ABOUT NETS, LLC

A leader and innovator in wireless network diagnostics

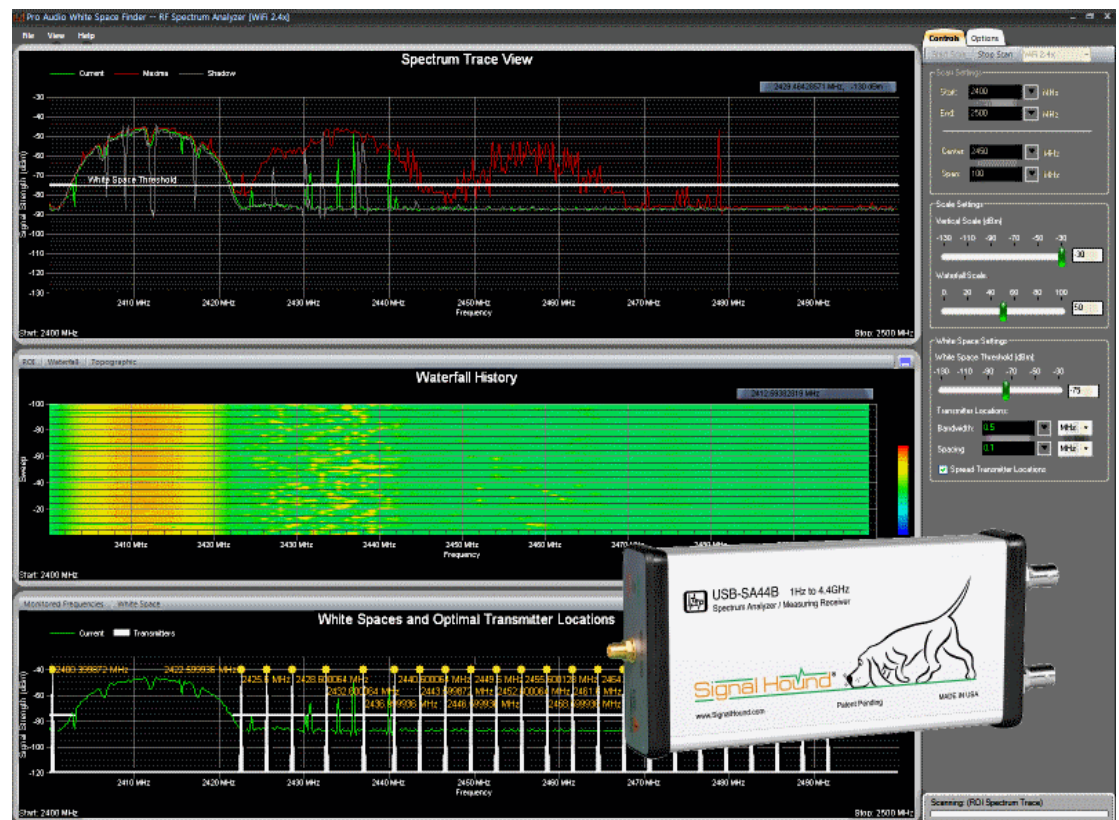
NUTS ABOUT NETS, LLC

Innovative Tools For Troubleshooting Wireless Networks

Pricing for Pro Audio White Space Finder / RF Spectrum Analyzer Model PAWS4400

- Electronics / Analyzer Package
- Multiple Antennas
- USB-to-PC Connection Cable
- High-impact Pelican Carrying Case
- Pro Audio White Space Finder software and Activation Code

Single Unit: **\$1495 US + S/H** (Discounts available when purchasing 2 or more).



www.NutsAboutNets.com

Nuts About Nets, LLC
2855 152nd Ave NE
Redmond, WA 98052

Tel. 425.881.6506
sales@NutsAboutNets.com