

# NUTS ABOUT NETS, LLC

Innovative Tools For Troubleshooting Wireless Networks

## AirSleuth-Pro 2.4 GHz Spectrum Analyzer

2.4 GHz Spectrum Analysis plus 802.11 Network Discovery –  
in a single tool...

### NINE REAL-TIME CHARTS OF RF DATA

Employing multiple views provides a better understanding of the local, RF landscape of the wireless network.

### SPECTRUM ANALYSIS PLUS NETWORK DISCOVERY

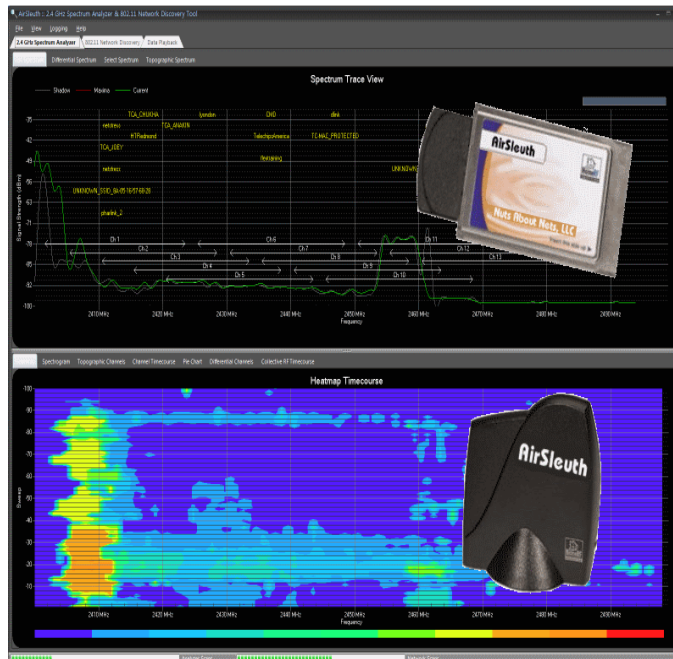
Includes two software modules integrated into one application – one for 2.4 GHz spectrum analysis and a second for performing 802.11 network discovery.

### DATA RECORDING & PLAYBACK

Features a simple, yet powerful, data logging capability. Data files that are recorded can later be viewed using AirSleuth's built-in Data Playback feature.

### PDF REPORTS

Includes a simple-to-use report generation capability. Creates an Adobe PDF-formatted file that includes all charts created by the Spectrum Analysis module.



### AirSleuth Features:

- PCMCIA or USB wireless device
- Nine (9) real-time diagnostic views of the RF data
- 2.4 GHz spectrum analysis plus 802.11 network discovery
- Data recording and playback
- PDF Report Generation
- Real-time calculation of "Best WiFi Channel"
- Sensitive and accurate 2.4 GHz radio transceiver
- MMCX connector for use with external antennas

**The AirSleuth Spectrum Analyzer is a robust diagnostic tool that provides mobile, site-survey information to simplify optimal configuration of wireless networks, proper location of RF devices, and aids in identifying potential sources of interference.**

AirSleuth is a PC-based, spectrum analyzer that operates in the 2.4 GHz range of the radio frequency (RF) spectrum. It can be used to monitor wireless devices and RF interference that impact the performance, range and security of wireless networks. The data it provides is most useful during installation and troubleshooting of 802.11b/g wireless networks.

**NUTS ABOUT NETS, LLC**

A leader and innovator in wireless network diagnostics

# NUTS ABOUT NETS. LLC

## Innovative Tools For Troubleshooting Wireless Networks

### IMPROVE PERFORMANCE, SECURITY AND RANGE OF WI-FI NETWORKS

#### INSTALLATION

Optimally install and maintain wireless networks.

#### TROUBLESHOOTING

Troubleshoot poorly-performing wireless networks by detecting the presence of RF interference.

#### PROPER LOCATION

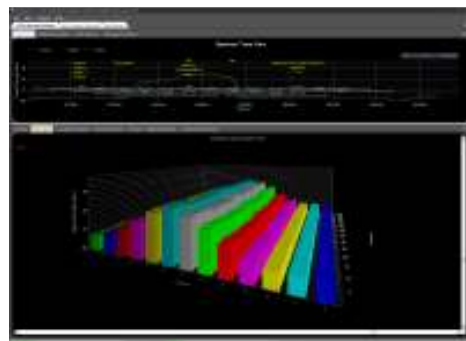
Properly locate wireless devices to as to maximize range and throughput and minimize interference from competing wireless devices.

#### SPECTRUM ANALYSIS PLUS NETWORK DISCOVERY

The combination of spectrum analysis and 802.11 network discovery creates a powerful diagnostic tool for installing and troubleshooting wireless networks.

AirSleuth offers 9 real-time diagnostic views of the RF data it captures. It also includes a real-time calculation of "Best WiFi Channel". Employing multiple views of the data allows the user to gain a better understanding of the local, RF landscape in which their wireless network is operating. The Sleuth series of analyzers include two software modules integrated into one application -- one for 2.4 GHz spectrum analysis and a second for performing 802.11 network discovery. In addition to displaying results in real-time, AirSleuth includes a logging functionality that allows data to be recorded and later played-back for analysis. Also, AirSleuth generates reports in Adobe PDF format and can print snapshots of data traces from the screen.

Armed with this knowledge the user can make better decisions setting-up, configuring and maintaining their wireless network so that it operates at optimal bandwidth. Also, if a wireless network is performing poorly then AirSleuth can aid in determining whether other wireless devices operating in the vicinity are the source of RF interference.



#### AirSleuth May Be Used For:

- Optimally installing and maintaining wireless networks
- Troubleshooting poor-performing wireless networks by detecting the presence of RF interference
- As an aid in properly locating wireless devices so as to maximize range and throughput and minimize interference from competing wireless devices
- The combination of spectrum analysis and 802.11 network discovery creates a powerful diagnostic tool for setting-up and troubleshooting wireless networks

For more information on any of our products please visit us on the Web at:

[www.NutsAboutNets.com](http://www.NutsAboutNets.com)

**NUTS ABOUT NETS, LLC**

A leader and innovator in wireless network diagnostics

# NUTS ABOUT NETS, LLC

**Innovative Tools For Troubleshooting Wireless Networks**

**AirSleuth ships as a hardware + software package. There are two versions of the hardware – a USB wireless device (with internal antenna) or PCMCIA card (with external antenna).**

## Specification

- Interface: USB or 16-bit PCMCIA Type II
- Frequency: 2.401 GHz through 2.483 GHz
- Sensitivity: -90 dBm
- Antenna: MMCX connector (PCMCIA wireless device) or internal (USB wireless device)
- Certifications: FCC

## Minimum System Requirements

- Microsoft Windows XP PRO (with SP3), Windows Vista or Windows 7 (32-bit)
- Microsoft Windows .NET Framework 3.0 (or higher)
- Intel Pentium M 1.6 GHz (Intel Core 2 Duo 2.0 GHz or higher recommended)
- 1 GB memory (2 GB recommended)
- a minimum of 300 MB available hard disk space (for installation and data recording)
- an available USB port or 16-bit PCMCIA Type II (or compatible) slot for the wireless device supplied by Nuts About Nets
- built-in 802.11 capability or an external 802.11 adapter installed with NDIS 5.x drivers (required for network discovery functionality)

## Pricing

- AirSleuth Package with USB Wireless Device: **\$395 USD + S/H**
- AirSleuth Package with PCMCIA Wireless Device: **\$395 USD + S/H**

NOTE: Discounts are available when purchasing 4 (or more) units...

[www.NutsAboutNets.com](http://www.NutsAboutNets.com)

**Nuts About Nets, LLC**  
**2855 152<sup>nd</sup> Ave NE**  
**Redmond, WA 98052**

**Tel. +1 425.881.6506**  
**sales@NutsAboutNets.com**